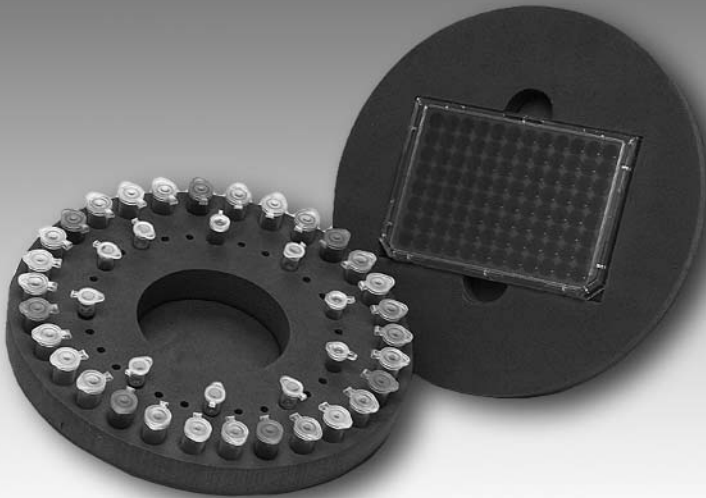


# MULTIPLE SAMPLE STARTER SET

## ACCESSORY FOR THE

### VORTEX-GENIE® 2 FAMILY OF MIXERS

Installation & Operating Instructions  
Catalog No. 504-0233-00 (Model H301)



70 Orville Drive, Bohemia, NY 11716 U.S.A.  
(631) 567-4700 • Fax: (631) 567-5896 • Toll Free: 888-850-6208  
Customer Service: [custsvc@scientificindustries.com](mailto:custsvc@scientificindustries.com)  
[www.scientificindustries.com](http://www.scientificindustries.com)

# Multiple Sample Starter Set Manual

The Multiple Sample Starter Set can be used with the Vortex-Genie® 2 family of mixers and consists of the following:

- Six-inch Platform (Part No. 146-6005-00)
- Microtube Foam Insert (Part No. 504-0234-00)
- Microplate Foam Insert (Part No. 504-0235-00)

Each insert fits snugly into the six-inch platform attachment to accommodate either 60 microtubes or one standard footprint microplate. The inserts are made of high-density foam that is designed to return to its approximate shape after repeated use. In addition, different microtube sizes can be used without distorting the microtube insert holes.

**NOTE:** Foam inserts should be replaced periodically for optimal performance.

**NOTE:** The microplate insert should not be used for more than 30 minutes as heat build-up may affect the contents of the microplate. For applications that require microplate shaking for greater than 30 minutes, a two-tiered insert, designed to protect microplates from heat build-up, is available (Part No. SI-0510).

## INSTALLATION

1. Turn power to “OFF” (○) position on the Vortex-Genie 2 family of mixers.
2. Remove the installed attachment by pulling it straight up.
3. Place the six-inch platform on the post and rotate until “flats” align, press down firmly until the platform snaps into place.
4. Place the microtube or microplate insert on the platform and press down firmly around the entire edge of the insert to ensure that it is securely seated within the platform base.
  - a. When using the microtube insert, ensure all tubes are inserted to the same depth for optimal mixing results.
  - b. When using the microplate insert, ensure all edges of the microplate are securely seated to prevent dislocation during operation.
5. Start the vortex mixer at setting No. 5 on the dial and increase or decrease to desired speed. Settings above No. 7 on the dial are not necessary and not recommended for these attachments.

 **CAUTION! Do not lift the Vortex-Genie 2 family of mixers by their attachments.**

All of the attachments, including the six-inch platform, are removable. They will pop off easily when lifted, and snap on again just as easily by aligning and then pressing down.

 **CAUTION! Failure to follow operating instructions can compromise user's safety.**

## CARE AND HANDLING

The six-inch platform attachment is made of chemically resistant thermoplastic and is highly impervious to most chemicals. Still, it is recommended that spills be blotted quickly.

The high-density foam inserts are protected by a film, which will prevent absorption of aqueous solutions. Acids, bases and organics should be wiped up immediately to prevent damage to the material.

